



CLAY EDUCATION
FOUNDATION

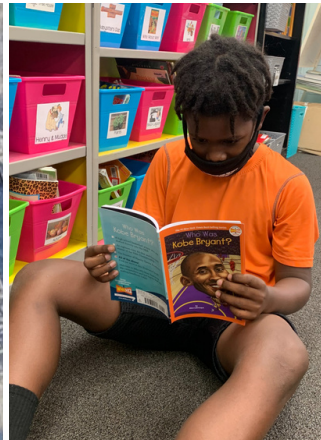
IMPACT REPORT 2020-2021



@ClayEducationFoundation



@CefClay



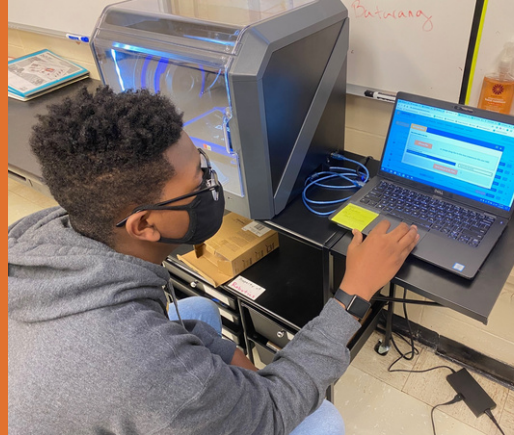


WHY WE'RE HERE

The Clay Education Foundation empowers possibilities in 44 clay county public schools for 38,000 students and 2,500 educators by investing in educators, innovation, and literacy. This targeted support ensures that students, teachers, and schools have the tools and resources they need to help students on their journey to future success.

The 2020-2021 school year was one of the most challenging and unique years we have had yet, but the Foundation remained flexible and responsive to the changing needs of students and teachers. Together, with our community, we kicked off the school year with the distribution of 500 new backpacks filled with supplies to students on the Free & Reduced Lunch Program, as well as, hosted a drive-thru giveaway of school supplies to over 800 educators in Clay County. We rolled out a first-of-its-kind program, bringing STEM career pathways in high-demand fields to Kindergarten through 8th-grade students in Orange Park. With our partners, we launched the one-stop-shop of college and career planning resources via the Future Ready Clay website. In October, we took our first 5K event virtual and kicked off another 44-member cohort of Clay Teachers LEAD. By January, we were able to host the ribbon-cutting ceremony for the new Tools 4 Clay Schools Store and saw 1,600 teachers come through the doors through the end of the school year. We worked with media partners like Action New Jax to recognize 88 educators and staff through our annual Apple Awards celebration virtually. With your help, the Foundation raised over \$500 thousand to support these programs and more! Thank you for working together to make a difference in the lives of students and teachers!





OUR IMPACT



\$550,000+
Raised
by the Foundation
in the 2020-2021 year



21
Classroom
Grants
for literacy, STEM,
& the arts



\$60,000
for STEM
Education
distributed
throughout
Clay County



2000
Students
utilized college
and career
planning
resources



94% of Funds
Raised
directly support
programs



\$85,000
in School
Supplies
given to teachers
for classrooms in need



100
Volunteers
gave back to our
schools



88
Teachers
& Support
Staff
recognized and
honored

BOARD OF DIRECTORS

We're excited to share highlights of the journey we've been on this year with you in this report. Together, we improve public education for thousands of students, leading to a stronger, more vibrant community.



GI TEEVAN
Vice-Chair
Prodigi/TECK Vending



NICOLE QUEZADA
Treasurer
Wells Fargo



STEPHANIE CRISTODERO
Secretary
D2B Kids



AL DEJESUS
Rhodes Graduation Services



JESSICA EHLINGER
Clay County District Schools



TERRY HICKS
Office Depot/Office Max



CHANDA HOLSEY
National Medical Association



JOHN HORNE
The Davie Law Group



HUGH OSTEEN
OPC News, LLC / The Clay Today



NIGEL PERRYMAN
US Bencor



KATHLEEN SCHOFIELD
Co - Northeast FL STEM2Hub



CELESTE SCIANDRA
Co - Northeast FL STEM2Hub

“Right now, thanks to the support of our partners, a Clay County student is having a learning experience made better by the work we do. Because our work is about students. It's about teachers. It's about connecting them to the resources they need to be successful in the classroom and in life.”



Makayla S. Buchanan
MAKAYLA BUCHANAN
Executive Director
Clay Education Foundation



Lisa A. Ashworth
LISA ASHWORTH
Board Chair
Community First Credit Union

SCHOOL DISTRICT LEADERSHIP



MARY BOLLA
Chair



ASHLEY GILHOUSE
Vice-Chair



TINA BULLOCK
School Board Member



JANICE KEREKAS
School Board Member



BETH CLARK
School Board Member



DAVID BROSKE
Superintendent

“ The collaboration with our Foundation is priceless. The assistance and materials they provide our teachers along with the programs meeting the needs of our students in reading and STEM initiatives are integral to the success of our district.”

- Mary Bolla
School Board Chair, CCSD

“ Many thanks to the Clay Education Foundation for their tireless work and advocacy to benefit the students of Clay County District Schools. Our Foundation is a valued partner in our goal of providing world-class educational opportunities for our students.”

- David Broskie
Superintendent, CCSD

STATEWIDE STAR AWARD



As an educator with the district for 17 years, Mary Bolla was steadfast in her belief in the potential of the Clay Education Foundation, contributing personally through payroll deduction as a teacher and now speaking to faculty members to encourage them to do the same. When she became a school board member, she was a leader during the foundation's transition to a full-time executive director and stepped up her involvement in ways that set the stage for exponential growth and impact. Mary is recognized as the Consortium of Florida Education Foundation's STAR School Board Member of the Year for her role as a servant leader, bridge-builder and strong and respected advocate who sees no job too big or too small to tackle.

TOOLS 4 CLAY SCHOOLS

SUPPLYING CLASSROOMS IN NEED



The Clay Education Foundation operates the Tools 4 Clay Schools Store, where we collect, store, and distribute school supplies and classroom materials to help alleviate the burden from low-income families, as well as teachers, who often spend \$500 of their own money buying supplies for their classrooms when students come without.

Due to the COVID-19 pandemic, we delayed our grand opening until January 2021, but since then, more than 1,000 Clay educators have shopped at the store!

The store has everything from pencils, crayons, and notebooks, to hand sanitizer and kleenex. This program is available to every public school in Clay County with the goal of ensuring all students have the supplies needed to be in school ready to learn. Teachers simply schedule their shop online and visit us during our open hours!



\$85,000
in School Supplies
given to teachers
for classrooms in need

2,402
free teacher shops

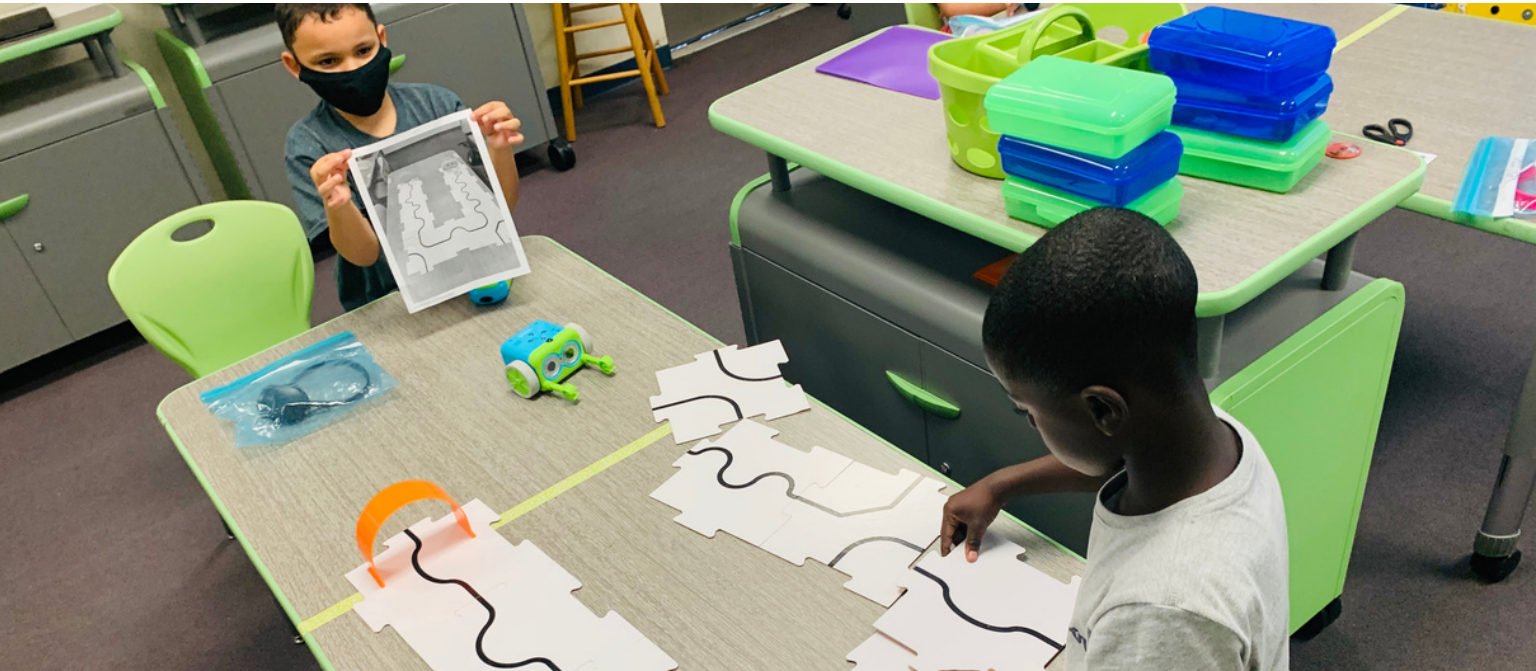


97% of Teachers
reported feeling more
supported by community

99% of Teachers
reported increased
class participation



STEM EDUCATION



Clay County has a rich history in providing afterschool STEM opportunities for students via robotics clubs, but these activities are not accessible for students without reliable transportation. The "Full STEM Ahead" initiative is a solution and a first-of-its-kind program in Clay, establishing STEM career pathway lessons inside the school day so all students are able to have the hands-on, career-aligned experiences.

Each school year, new students will participate in STEM career pathway lessons and activities, meaning the infrastructure and curriculum purchased this year will reach thousands of students within just a few years' time, presenting a great opportunity to increase interest and exposure to computer science fundamentals and vital 21st-century skills, while improving student achievement in math and science.

2 Schools

participated in the pilot launch of the K-8th grade STEM career pathways, where experiences and knowledge in the junior high can build off the fundamentals learned in elementary.



3 STEM Career Pathways

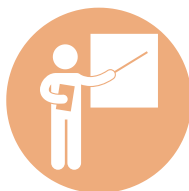
built in the areas of artificial intelligence, cybersecurity, and drone technology for students K-8th grade



\$60,000+ for STEM education distributed across Clay County

25%+ Better

proficiency levels seen for students in 5th grade pilot classroom compared to their peers and school district at-large.



45 Teachers

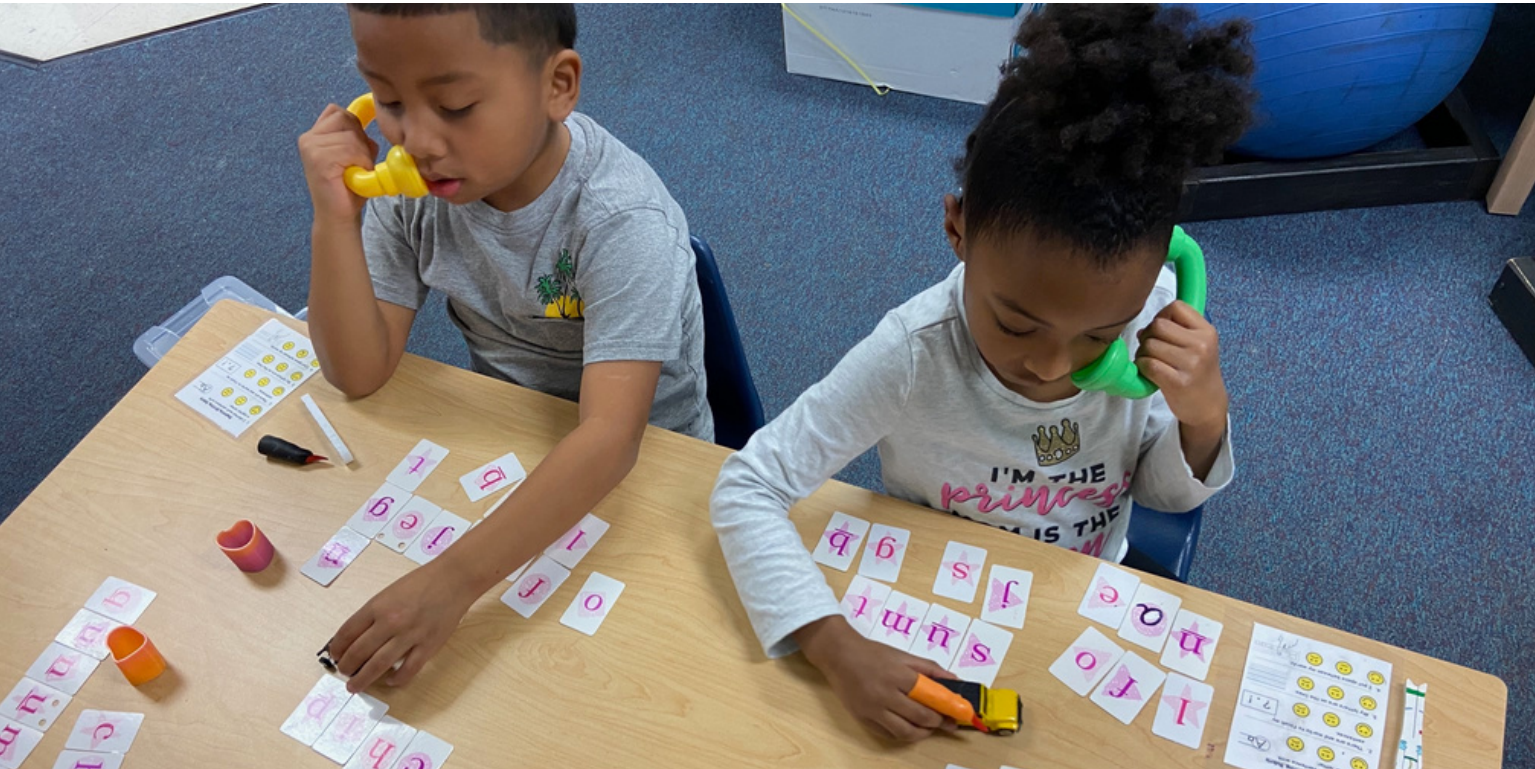
trained in the STEM career pathways and science curriculum



3,354 Students

experienced hands-on learning STEM lessons through the two pilot programs

LITERACY



336 Students
impacted by literacy
programs



13%
percent increase in student
reading levels

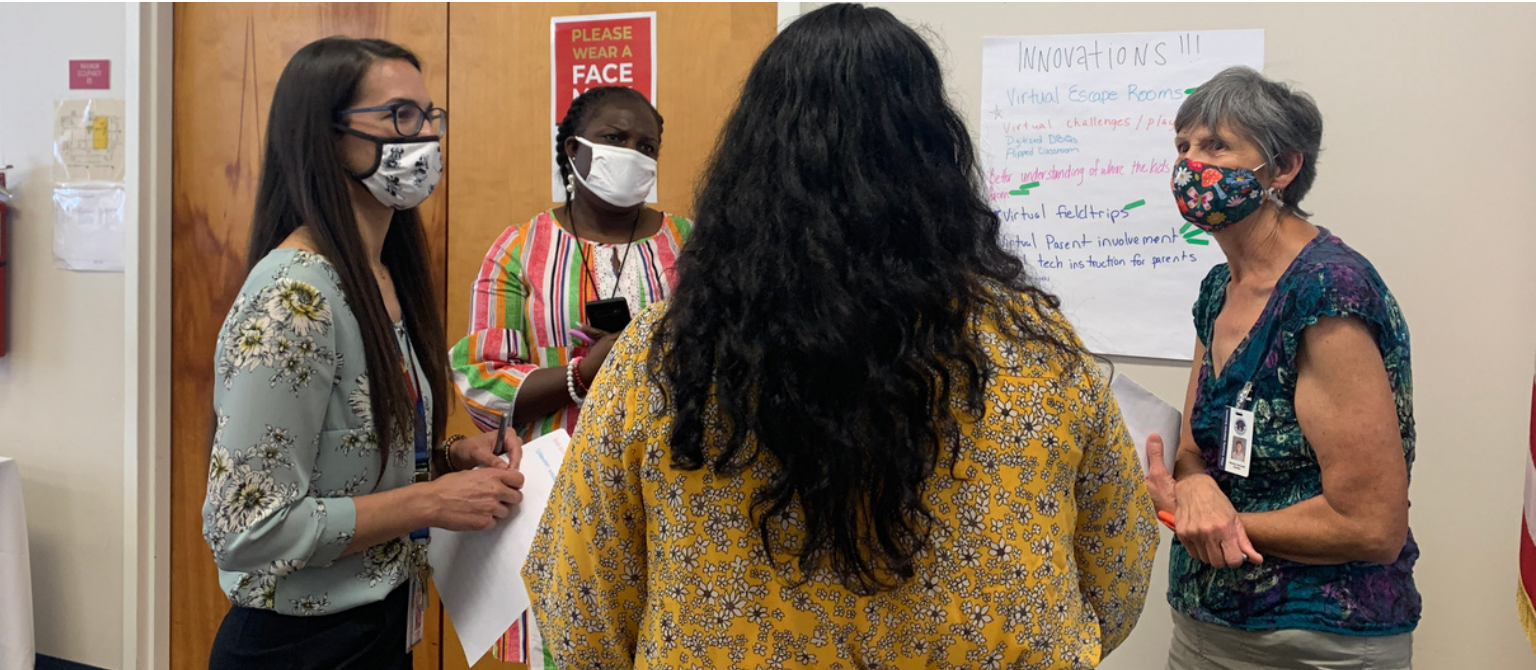


426 Books
provided to two
Title I schools

We know that students from economically disadvantaged households will enter kindergarten less able to recognize their letters, count to 20, write their name, or read a book. To support the vision that all our students are reading at or beyond grade level despite their socio-economic status, the Foundation supports Kindergarten through 3rd-grade classroom libraries and supplements to English language arts curriculum through the "Let's Read, Clay" program.

This year, we supported classroom libraries at two Title I schools and provided funding to pilot an interactive literacy program, "Alive Studios", that uses augmented reality with the primary goal of closing those early literacy gaps by increasing phonological awareness in Kindergarten classrooms. The program was also used for student remediation in 1st and 2nd grade.

RECOGNIZING & SUPPORTING EDUCATORS



We know the right teacher can be life-changing for a student and set them on a path towards success. That's why we invest in recognizing, celebrating, and supporting educators across the school district through a variety of programs. From hosting 1,000+ people virtually this year to help us recognize 44 teachers and 44 support employees nominated by their peers to launching a new professional development cohort for educators looking at taking the next step in their career path, we're right there to help one of Clay County's most valuable assets, teachers, feel more supported and empowered.



44 Teachers participated in year-long professional learning opportunities through Clay Teachers LEAD

88 Nominees recognized and honored at the Apple Awards virtual celebration event



22 Educators joined the first cohort of Aspiring LEADers, gaining hands-on experience in becoming a principal



GRANTS 4 GREAT IDEAS



Career-ready students possess a strong foundation in literacy, as well as exposure to STEM skills. For this reason, the Clay County Education Foundation supports literacy and STEM education mini-grants by providing teachers across the school district at all grade levels with classroom supplies and enrichment materials that will expand student experiences beyond that for which general funds are available.

Through the mini-grant process, we reach teachers, media specialists, and students from all areas of the county in every grade level! This strategy allows us to help close learning gaps and contribute to equitable access to 21st Century learning for all learners, regardless of which part of the county they live, while helping teachers improve teaching quality and save personal money.



21
classroom grants for
literacy, STEM, & the arts



6000+ Students
K-12th grade impacted

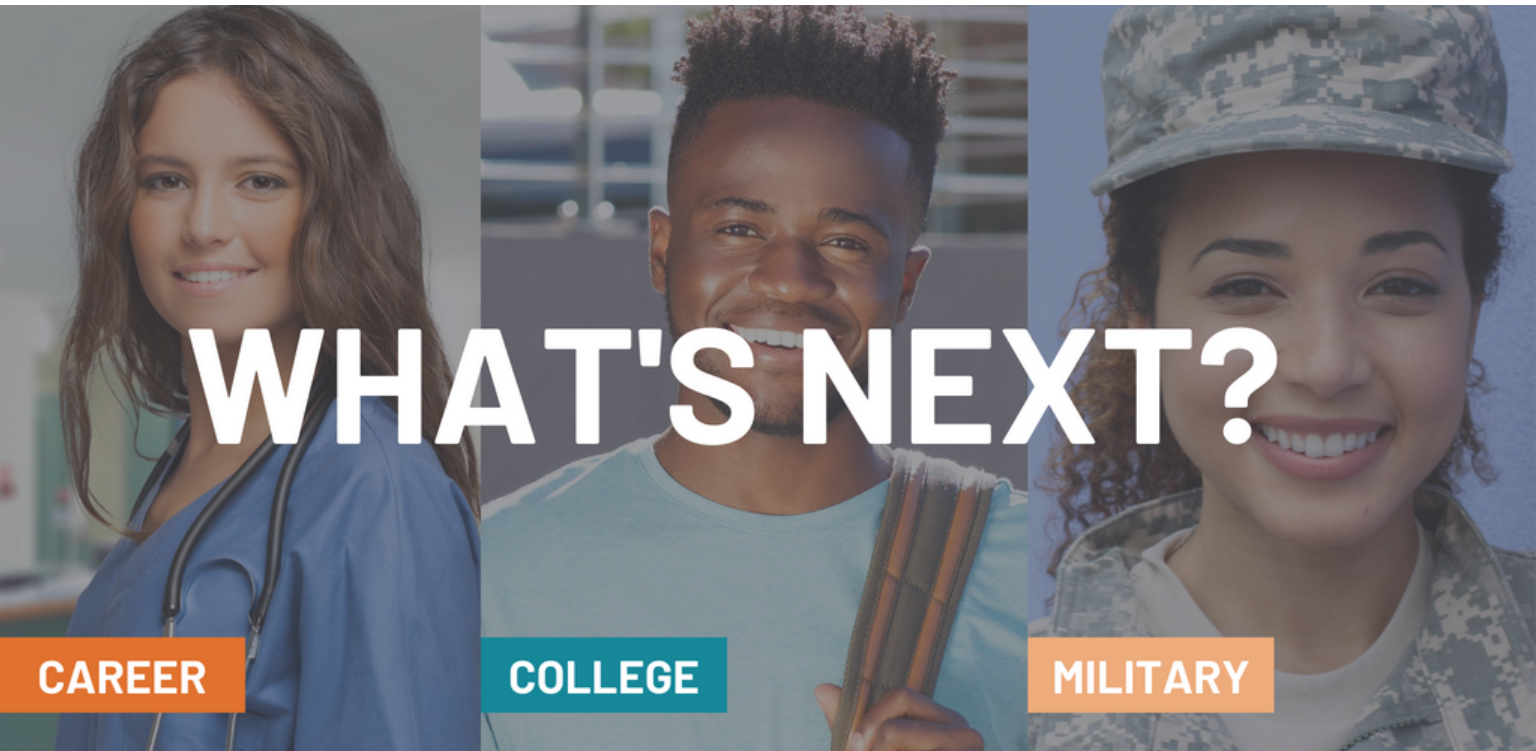


100%
of teachers report an
increase in overall teaching
quality thanks to materials
purchased through grant

“Community First Cares is proud to support the great work of our Clay County teachers. The Grants for Great Ideas Program spotlights innovation in the classroom and impacts student learning well beyond our expectations. Celebrating, rewarding and investing in education plays a vital role in growing a stronger community and we are honored to play a part in making that happen!”

Missy Peters
Executive Director
Community First Cares Foundation

COLLEGE & CAREER PLANNING RESOURCES



2000 Students
utilized college
and career planning
resources



In a collaborative effort between the Clay County School District, the Clay Education Foundation, and business partners, the "Future Ready Clay" initiative offers students and families across Clay County vital information regarding college and career planning.

600 visitors
to Future Ready Clay
website a month!



With the goal of preparing all Clay County students for a successful life after high school, this program began as a convenient one-stop-shop web-based resource available for free to all Clay County students, families, and faculty, with information such as local and national scholarship opportunities, FAFSA completion timeline and tips, links to virtual college tours, 9th-12th grade level checklists, career pathways, and more.



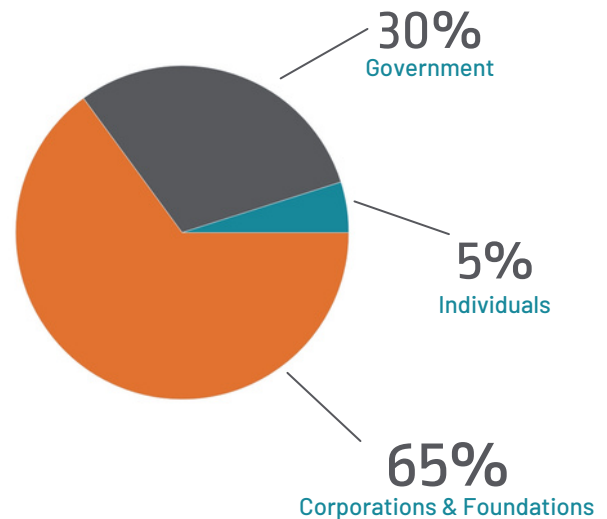
3 in-person
FAFSA completion and
college planning workshops
held for families
throughout the county

2020-2021 FINANCIAL SUMMARY

\$550,154.98

total revenue

94 cents of every **\$1.00**
directly supported programs.



\$516,500.51

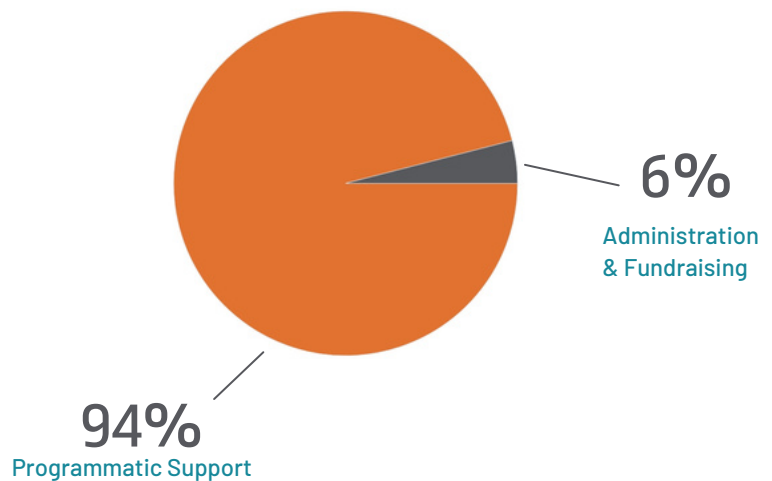
program expenses

\$33,654.47

administration &
fundraising expenses

\$71,012.74

net assets as of June 2021



THE POWER OF A 1:1 MATCH

Each year we have access to 1:1 matching funds from the State of Florida for contributions that support low-performing students, technical career education, literacy initiatives, Science, Technology, Engineering, Math (STEM) education initiatives, increased teacher quality and/or increased graduation rates.



**School District Education
Foundation Matching
Grant Program**

In 2020-2021 you helped us match \$67,000 towards eligible programs!

WE THANK OUR PARTNERS

County Impact \$50,000+

Clay County Board of County Commissioners
Clay County District Schools
School District Education Foundation Matching Grant Program

Program Focus \$25,000+

Northeast Florida STEM2Hub

Superintendent Partner \$10,000+

The Bailey Group
Brandt
Clay Electric Cooperative
Community First Cares Foundation
Office Depot
Woz Education

Principal Partner \$5,000+

AT&T
Community Foundation of Northeast Florida
Lastinger Family Foundation
Leonard's
Max and Dreyfus Foundation
Motorola Solutions
Wells Fargo

Educator Partner \$2,000+

CSX
Dollar General
Florida Lottery
The Paul E. and Klare N. Reinhold Foundation, Inc
PowerUp Edu
Rhodes Graduation Services
Rotary Club of Orange Park
License to Learn
United Healthcare
VyStar Credit Union



\$20 from every Support Education specialty license plate goes directly to schools in Clay County for:

- Classroom innovation
- School supplies
- Supporting and recognizing teachers

While the look has changed, one thing remains the same – your contributions through the purchase of a Support Education specialty license plate directly supports education initiatives in your own backyard.

CHAMPIONS FOR CHANGE

Champions for Change is a passionate and generous community of individuals just like you – from across the county – invested in the future of Clay County public education.

Launched in 2020, this group gives monthly to support the mission of the Clay Education Foundation, representing nearly \$2,000 a year!

Lisa Ashworth - Matthew Hutchins - Patrick Golemme - Kathy Schofield



Mission

The Clay Education Foundation is dedicated to strengthening our Clay County public schools and community by empowering students and educators, building community partnerships, and providing the necessary tools and resources to help all students reach success in college and life.

Vision

To see the community united in support of quality public education so that all students in Clay County public schools are able to reach their full potential and be prepared for life after high school.

www.clayeducationfoundation.com

900 Walnut Street
Green Cove Springs, FL 32043



CONSORTIUM
OF FLORIDA EDUCATION
FOUNDATIONS **MEMBER**