



CLAY EDUCATION  
FOUNDATION

# PARTNERSHIP GUIDE



## ABOUT US

As a 501(c)(3) non-profit and the recognized district-wide education foundation for Clay County School District, the Clay Education Foundation works collaboratively with school leaders to determine how and where additional state funding, private-sector investment, and volunteer involvement can have the greatest impact on student success. In the last 30 years, we've touched countless lives, with 20,000+ students and 1,000+ educators impacted by programs annually!

**Our Mission:** We are dedicated to strengthening our Clay County public schools and community by empowering students and educators, building community partnerships, and providing the necessary tools and resources to help all students succeed.

Since 1988, the Clay Education Foundation has led the effort to cultivate success for students and teachers through innovative programming, funding, community partnerships, and events. Today, over 90% of all revenue goes to academic and programmatic support.



# GOLF FORE EDUCATION - OCTOBER

Come out and have fun on the greens in our annual tournament benefiting student-centered programs across the county.

## HOLE IN ONE SPONSOR

\$5,000

- PLUS:
- Inclusion in formal media coverage
  - Special recognition prior to event, at reception, and during awards ceremony
  - Inclusion in all social media event posts
  - Logo on event towels for goody bags
  - Logo featured in e-newsletter leading up to event
  - Logo on event flyer upon sponsorship

## RECEPTION SPONSOR

\$2,500

- PLUS:
- Logo displayed at post-round reception

## CART SPONSOR

\$2,000

- PLUS:
- Company displayed on beverage cart\*

## AWARD SPONSOR

\$1,500

- PLUS:
- Logo on awards table
  - Recognition during awards ceremony

## PUTTING GREEN SPONSOR

\$1,500

- PLUS:
- Company displayed at practice putting green\*

## DRIVING RANGE SPONSOR

\$1,500

- PLUS:
- Company displayed at practice driving range\*

## EAGLE SPONSOR

\$1,000

- Listing on website with logo and hyperlink on main and event website pages
- Social media recognition before, during, and after event
- Company displayed at player check-in and on event banners
- 2 hole sponsor signs
- Logo inclusion in annual impact report

## BIRDIE SPONSOR

\$500

- PLUS:
- 4 player entries
  - 1 hole sponsor sign

## FOURSOME

\$400

- 4 player entries
- Cart & green fees
- Breakfast & lunch
- Proximity contests
- Door prizes & Goody bag
- Riding carts

## HOLE SPONSOR

\$250

- 1 hole sponsor sign
- Social media recognition

\*Does not carry over

Logo and funds due by September 15 for inclusion in all event media, program, and signage



# ALUMNI HALL OF FAME - DECEMBER

A night to celebrate and honor distinguished Clay County graduates whose achievements, character, and citizenship serve as a model to inspire and challenge current students.

WALK OF FAME SPONSOR \$5,000	AWARD SPONSOR \$2,500	RECEPTION SPONSOR \$1,250	TABLE SPONSOR \$750	STAR SPONSOR \$500
<ul style="list-style-type: none"> <li>8 VIP seating tickets (full table) + drink tickets</li> </ul>	<ul style="list-style-type: none"> <li>6 VIP seating tickets + drink tickets</li> </ul>	<ul style="list-style-type: none"> <li>6 general admission event tickets + drink tickets</li> </ul>	<ul style="list-style-type: none"> <li>4 general admission event tickets + drink tickets</li> </ul>	<ul style="list-style-type: none"> <li>2 general admission tickets to event + drink tickets</li> </ul>
<ul style="list-style-type: none"> <li>full-page color ad spread (two pages) in event program</li> </ul>	<ul style="list-style-type: none"> <li>full page color ad in event program</li> </ul>	<ul style="list-style-type: none"> <li>half-page color ad in event program</li> </ul>	<ul style="list-style-type: none"> <li>half-page color ad in event program</li> </ul>	<ul style="list-style-type: none"> <li>quarter-page color ad in event program</li> </ul>
<p>RECEPTION plus:</p> <ul style="list-style-type: none"> <li>logo included on event invite</li> <li>Name included in media stories</li> <li>Logo featured on Walk of Fame unveiling and invite</li> </ul>	<p>AWARD plus:</p> <ul style="list-style-type: none"> <li>logo featured on award base*</li> <li>logo displayed during awards*</li> </ul>	<p>TABLE plus:</p> <ul style="list-style-type: none"> <li>logo included in all digital marketing</li> <li>logo displayed during reception*</li> </ul>	<p>STAR plus:</p> <ul style="list-style-type: none"> <li>logo displayed on one table</li> <li>logo on screen during event</li> </ul>	<ul style="list-style-type: none"> <li>logo displayed on sponsor thank you board at event</li> <li>Included on event website for 1 year</li> </ul>

\*Does not carry over

Logo and funds due by October 1 for inclusion in all event media, program, and signage



# APPLE AWARDS - JANUARY

Be a part of the magic by supporting the annual Clay County Teacher and School-Related Employee of the Year Gala. This awards event hosts over 900 guests to honor all outstanding educators in our public schools.

TITLE SPONSOR \$25,000	RECEPTION SPONSOR \$5,000	FINALIST SPONSOR \$2,500	EDUCATOR SPONSOR \$1000	CLASSMATE SPONSOR \$500
<p>PLUS:</p> <ul style="list-style-type: none"> <li>• 6 tickets to the reception and VIP seats at main program</li> <li>• full-page color ad inside front cover of the event program</li> <li>• Special LIVE 2-minute presentation during the event and recognition</li> <li>• Inclusion in all social media event posts including Prize Patrol video</li> <li>• Event invitation*</li> </ul>	<p>PLUS:</p> <ul style="list-style-type: none"> <li>• 4 tickets to the reception and VIP seats at main program</li> <li>• full-page color ad in event program</li> <li>• Special recognition during program</li> <li>• Company logo featured on all event signage, printed materials, and photobooth prints</li> </ul>	<p>PLUS: <sup>*5 Available*</sup></p> <ul style="list-style-type: none"> <li>• 2 tickets to the reception and VIP seats at main program</li> <li>• Recognized during finalist award presentation*</li> <li>• Social media finalist sponsor on all posts featuring your "sponsored" teacher and school-related employee*</li> <li>• Logo featured on all event signage and printed materials</li> </ul>	<p>PLUS:</p> <ul style="list-style-type: none"> <li>• 2 tickets to reception and VIP seats at main program</li> <li>• Half-page color ad in event program</li> <li>• Social media posting before, during, and after event</li> </ul> <div data-bbox="974 1680 1258 1837" style="background-color: #008080; color: white; padding: 5px; text-align: center;"> <b>GIFT CARD &amp; PROMOTIONAL MATERIALS</b> </div> <ul style="list-style-type: none"> <li>• Logo name listed in event program</li> <li>• Listing on website with logo</li> <li>• Ability to put promotional materials in all 88 bags</li> </ul>	<ul style="list-style-type: none"> <li>• 2 tickets to reception and main program</li> <li>• Quarter-page color ad in event program</li> <li>• Social media posting during and after event</li> <li>• Logo rotating on program screens</li> <li>• Listing on website wit hyperlink on main and event pages</li> </ul> <div data-bbox="1291 1806 1567 1890" style="background-color: #008080; color: white; padding: 5px; text-align: center;"> <b>ADVERTISEMENT</b> </div> <ul style="list-style-type: none"> <li>• \$25-1/4 page (4 x 5")</li> <li>• \$50-1/2 page (8 x 5")</li> <li>• \$100-Full page (8 x 10")</li> </ul>

\*Does not carry over

Logo and funds due by December 1 for inclusion in all event media, program, and signage



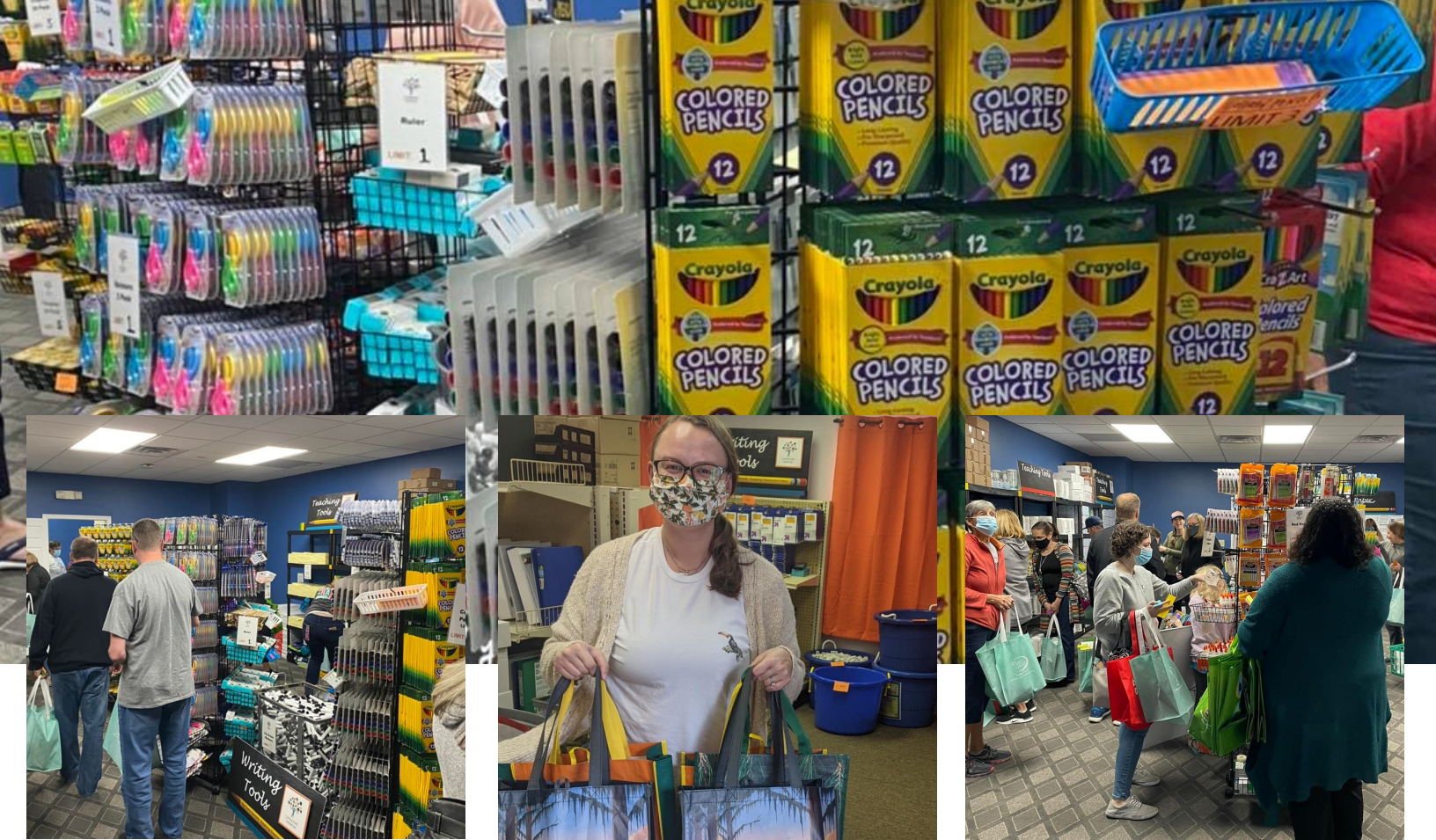
# BREWS, BOOTS & BLING - MAY

Our signature western-themed fundraising event! The event features interactive games, live music, and delicious barbeque.

TITLE SPONSOR \$7,500	DINNER SPONSOR \$3,000	CHAMPION SPONSOR \$2,500	COCKTAIL SPONSOR \$1,500	TABLE SPONSOR \$750
<ul style="list-style-type: none"> <li>Two tables of 8 with corporate signage</li> </ul>	<ul style="list-style-type: none"> <li>One table of 8 with corporate signage</li> </ul>	<ul style="list-style-type: none"> <li>6 general admission event tickets + drink tickets</li> </ul>	<p>Table:</p> <ul style="list-style-type: none"> <li>4 general admission event tickets</li> </ul>	<ul style="list-style-type: none"> <li>1 table for 10 with signage</li> </ul>
<ul style="list-style-type: none"> <li>Unlimited \$45 additional tickets</li> <li>Recognition and logos on ALL event media</li> </ul>	<ul style="list-style-type: none"> <li>Special 5-minute presentation opportunity during event</li> </ul>	<ul style="list-style-type: none"> <li>Corporate logo on website main page and event page</li> </ul>	<ul style="list-style-type: none"> <li>4 discounted \$45 additional tickets</li> <li>Special recognition on bar</li> </ul>	<ul style="list-style-type: none"> <li>Social media recognition on day of event</li> <li>Logo inclusion on event banner</li> </ul>
<ul style="list-style-type: none"> <li>Special 5-minute presentation opportunity during event</li> <li>Stage banner with logo</li> </ul>	<p>AWARD plus:</p> <ul style="list-style-type: none"> <li>logo featured on award base*</li> <li>logo displayed during awards*</li> </ul>	<p>TABLE plus:</p> <ul style="list-style-type: none"> <li>logo included in all digital marketing</li> <li>logo displayed during reception*</li> </ul>		<ul style="list-style-type: none"> <li>logo displayed on sponsor thank you board at event</li> <li>Included on event website for 1 year</li> </ul>

\*Does not carry over

Logo and funds due by October 1 for inclusion in all event media, program, and signage



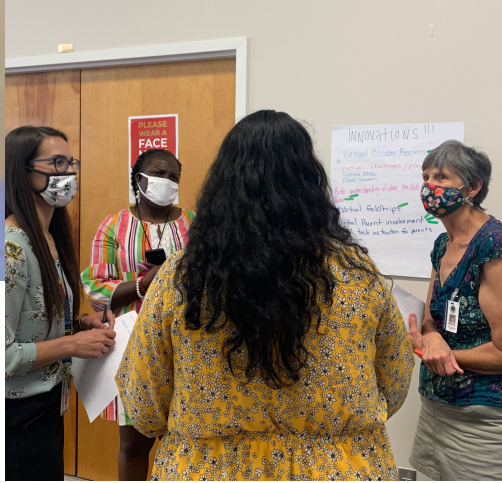
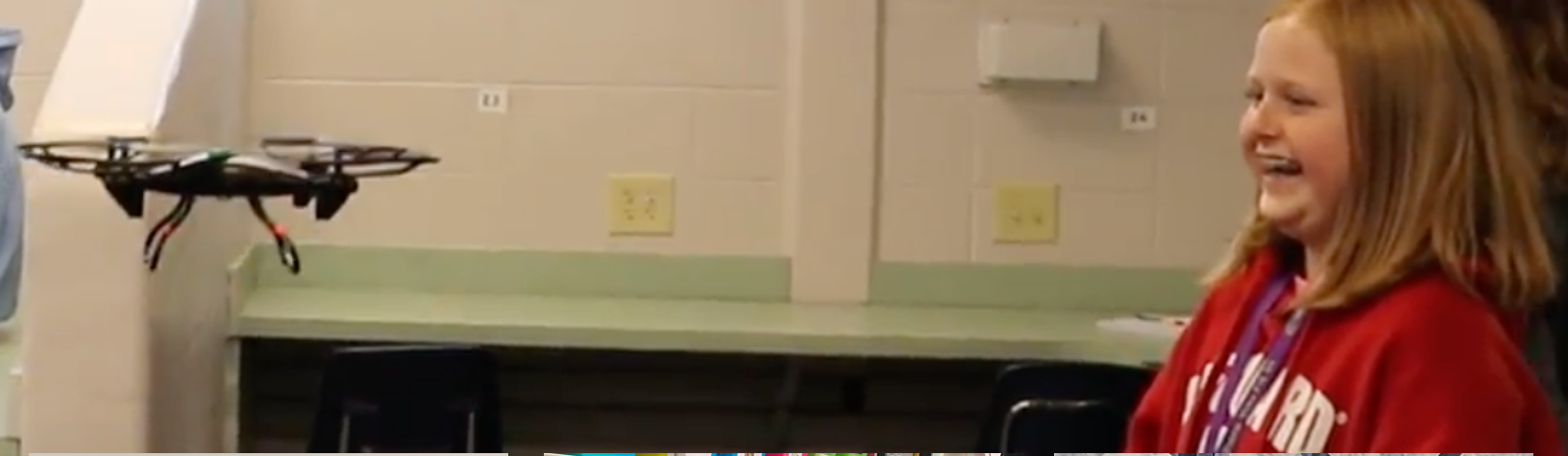
# TOOLS 4 CLAY SCHOOLS STORE

The Tools 4 Clay Schools Store provides free school supplies to all Clay County Public Schools teachers for their classrooms and students in need. Teachers are invited to shop for free at our permanent location four times a year! Supplies are provided through a combination of donated products and financial support.

PRESENTING PARTNER	CART PARTNER	AISLE PARTNER	SHELF PARTNER	TEACHER SHOP PARTNER
\$20,000	\$3,000	\$2,000	\$1,000	\$500
<p>PLUS:</p> <ul style="list-style-type: none"> <li>• Logo featured on plaque outside store</li> </ul>	<p>PLUS:</p> <ul style="list-style-type: none"> <li>• Brand 25 carts used by teachers to shop for supplies</li> </ul>	<p>PLUS:</p> <ul style="list-style-type: none"> <li>• Logo featured on one aisle in store year-round</li> </ul>	<p>PLUS:</p> <ul style="list-style-type: none"> <li>• Logo featured on one shelf in store</li> <li>• Table set-up for 2 shopping events</li> </ul>	<ul style="list-style-type: none"> <li>• Table set-up for 1 shopping event</li> <li>• Social media recognition (200,000+ reach)</li> </ul>
<ul style="list-style-type: none"> <li>• Branded check-in table with logo</li> <li>• Social media recognition at each event</li> </ul>	<ul style="list-style-type: none"> <li>• Table set-up for all 4 shopping events</li> </ul>	<ul style="list-style-type: none"> <li>• Table set-up for 3 shopping events</li> <li>• Social media recognition prior to event</li> </ul>	<ul style="list-style-type: none"> <li>• Highlighted in e-newsletter prior to shops to teachers</li> </ul>	<ul style="list-style-type: none"> <li>• Logo featured on partner board in store, on website page for 1-year, and annual report</li> </ul>
	<ul style="list-style-type: none"> <li>• Social media recognition after event</li> </ul>		<ul style="list-style-type: none"> <li>• Logo featured on monthly videos of program in action</li> </ul>	

\*Does not carry over

Logo and funds due 1 month before each shop for inclusion in all event media, program, and signage



# PROGRAM PARTNERSHIP OPPORTUNITIES

Your investment in the four core program areas - supporting educators, Kindergarten readiness and early literacy, STEM education and workforce development, and college & career planning changes lives. Every dollar donated to these programs has the opportunity to be matched 1:1 by the State of Florida Matching Dollars Program for Local Education Foundations!

PRESENTING PARTNER \$10,000	SECTOR EXCLUSIVE PARTNER \$5,000	SCHOOL-WIDE PARTNER \$2,500	CLASSROOM PARTNER \$1,000	CLUB PARTNER \$500
<b>PLUS:</b> <ul style="list-style-type: none"> <li>2 North Florida media stories</li> </ul>	<b>PLUS:</b> <ul style="list-style-type: none"> <li>PeachJar flyer 4 times annually</li> </ul>	<b>PLUS:</b> <ul style="list-style-type: none"> <li>PeachJar flyer 2 times annually</li> </ul>	<b>PLUS:</b> <ul style="list-style-type: none"> <li>School board check presentation</li> </ul>	<ul style="list-style-type: none"> <li>Logo and hyperlink on website</li> </ul>
<ul style="list-style-type: none"> <li>Invite to Superintendent's Roundtable event</li> </ul>	<ul style="list-style-type: none"> <li>Tabling/marketing opportunity at 4 events of choosing</li> </ul>	<ul style="list-style-type: none"> <li>Tabling/marketing opportunity at 2 events of choosing</li> <li>Press release</li> </ul>	<ul style="list-style-type: none"> <li>PeachJar flyer 1 time annually (80,000+ parents)</li> <li>Logo featured on monthly videos of program in action</li> </ul>	<ul style="list-style-type: none"> <li>Social media recognition from Foundation and CCDS (400,000+ reach weekly)</li> </ul>
<ul style="list-style-type: none"> <li>Company featured in e-newsletter each time program is mentioned</li> </ul>	<ul style="list-style-type: none"> <li>Invite to "Principal for a Day"</li> <li>North Florida media story with photo and quote</li> </ul>	<ul style="list-style-type: none"> <li>Logo featured in e-newsletter quarterly</li> <li>Clay County media story</li> </ul>	<ul style="list-style-type: none"> <li>Tabling/marketing opportunity at 1 event of choosing (can be main event or programmatic)</li> </ul>	<ul style="list-style-type: none"> <li>Logo featured in e-newsletter 2 times annually</li> <li>Inclusion in annual impact report</li> </ul>

\*Does not carry over

\*One per industry sector per program\*

Logo and funds due by September 1 for inclusion in all program media and signage through school year





## PROGRAM SPECIFICS

### **Kindergarten Readiness & Early Literacy**

To support efforts for all our students reading at or beyond grade level, we support the building of Kindergarten through 3rd-grade classroom libraries, parent and community resource centers, train volunteers as reading mentors, and Dolly Parton's Imagination Library for Clay County.

### **STEM Education**

Through real-world applications, students get hands-on and transdisciplinary learning opportunities in science, technology, computer science, robotics, data science, mathematics, engineering, and the arts that prepare them for the 21st Century workforce. Projects: STEM CareerPathways, Science kits, Robotics, Teacher Professional Development, etc. \*Presenting Partner Taken\*

### **Classroom Grants**

A competitive grant program open to all Clay County Public School teachers and school administrators. The program is designed to fund creative and innovative teaching strategies that will change the way students learn or change the way teachers teach in literacy or STEM education with opportunities to present their ideas. \*Presenting Partner Taken\*

### **Teacher Leadership Development**

Each year, school-based Teachers of the Year make up a cohort of educators who participate in yearlong professional development opportunities where they are celebrated, supported, and encouraged as they step into their role as leaders and advocates for their students, school, and community, impacting student learning beyond the walls of their classroom.

### **Aspiring Leaders Connect**

Just as great classrooms can only exist with great teachers, great schools can only exist with great leaders. An immersive cohort experience of hands-on and intentional learning opportunities are provided to aspiring school leaders across Clay County where they gain experience in a variety of areas that helps grow the pipeline of great school leaders.

### **Parent Academy**

Annually, a cohort of parents are invited to a 6-month parent academy to learn more about being advocates for their students, engagement strategies and opportunities, and the innerworkings of schools and school district departments.

### **College and Career Readiness**

A collaborative cross-sector focus on improving students' readiness for a 21st-century college, career, and life. Housed in an accessible online format, all students, families, and educators can tap into the resources created for high schoolers to plan, prepare, and pay for a student's future, attend in-person workshops, and/or receive scholarships.

# OTHER PROGRAMS

## Principal for the Day - \$5,000

Business and community leaders have the opportunity to work alongside one of the 44 hard-working individuals that lead our Clay County public schools. Breakfast and lunch are included for all 44 participants. This partnership features your logo on all printed materials necessary for the program, inclusion in the school board presentation recognizing the event, social media recognitions by the Foundation to include video highlight reel from day, and opportunity to participate in "Principal for the Day" program.

## Teacher of the Month - \$5,000

Each month a Clay County teacher from one of the 44 public schools will be recognized for their impact in and out of the classroom. This partnership features your logo on all certificates printed for the year for Teacher of the Month, inclusion in the school board presentation for Teacher of the Month, monthly social media recognitions by the Foundation, school district, and school of teacher, and opportunity to engage in "Surprise" classroom visit each month to be shared via social media.

## Student of the Month - \$5,000

Each month a Clay County student from one of the 44 public schools will be recognized for their academic achievements, character, attendance, etc. This partnership features your logo on all certificates printed for the year for Student of the Month, inclusion in the school board presentation for Student of the Month, monthly social media recognitions by the Foundation, school district, and school of student, and opportunity to engage in "Surprise" classroom visit each month to be shared via social media.

# SCHOLARSHIPS

## FL Prepaid Jump Start Scholarship- \$1,200



A one-year Florida Prepaid College Foundation Scholarship, which provides 30 credit hours at the state college tuition rate, enabling the student to enroll in a Florida technical program, state college or state university. Support for financial aid, life skills and career exploration through three (3) virtual workshops.

Normal value of this scholarship is \$3,500!

## FL Prepaid Matching Dollars Scholarships - \$1,800; \$4,200; \$7,600

Looking to provide a student from an economically-disadvantaged background with a life-changing opportunity? In partnership with FL Prepaid, we're able to offer matching dollar scholarships for Clay students for 2-Year or 4-Year college/vocational certifications or 4-Year university scholarships (60-120 credit hours) at the above rates! Ask us for more details today!

Normal values of these scholarship are

# PARTNERSHIP AGREEMENT

Please complete and return to the Clay Education Foundation at [info@clayeducationfoundation.com](mailto:info@clayeducationfoundation.com) or mail to 900 Walnut Street, Green Cove Springs, FL 32043

Company: \_\_\_\_\_

Contact Person: \_\_\_\_\_

Billing Address: \_\_\_\_\_

City/State/Zip: \_\_\_\_\_

Phone: \_\_\_\_\_ Email: \_\_\_\_\_

Website: \_\_\_\_\_

**I am interested in supporting the following events/programs (check/insert amount below):**

## Events

Golf Fore Education \$\_\_\_\_\_

Alumni Hall of Fame \$\_\_\_\_\_

Apple Awards \$\_\_\_\_\_

Boot Scootin BBQ \$\_\_\_\_\_

## Unrestricted and Other Programs

Where it's Most Needed \$\_\_\_\_\_

Principal for the Day \$5,000

Teacher of the Month \$5,000

Student of the Month \$5,000

Scholarships \$\_\_\_\_\_

## Programs

Classroom Grants \$\_\_\_\_\_

Tools 4 Clay Schools \$\_\_\_\_\_

Kindergarten Readiness & Literacy \$\_\_\_\_\_

STEM Education \$\_\_\_\_\_

Teacher Leaderships Development \$\_\_\_\_\_

Aspiring Leaders Connect \$\_\_\_\_\_

College & Career Readiness \$\_\_\_\_\_

Parent Academy \$\_\_\_\_\_

## Payment:

Card (Via Website)

Please invoice me

Check enclosed

Signature: \_\_\_\_\_

Date: \_\_\_\_\_

Please make checks payable to:

Clay Education Foundation  
900 Walnut Street  
Green Cove Springs, FL 32043  
<http://clayeducationfoundation.org/donate>

# YOU CAN INVEST IN CLAY'S MOST VALUABLE ASSET!



CLAY EDUCATION  
FOUNDATION

## SPREAD THE WORD.

Tell your friends and family about this worthy cause. There's no better way to make an impact than to become an active advocate yourself. Join now and make an impact!

## GIVE.

Every dollar you give can be matched by the state of Florida, so your generosity is doubled! Join us in ensuring that every student in Clay County has a vibrant, high-quality public education. Ask us for details!



**School District Education  
Foundation Matching  
Grant Program**



## CONNECT.



@clayeducationfoundation



@CEFClay



WEBSITE